

A professional office desk and hutch set in a room with a vaulted ceiling and skylight. The desk is made of dark wood with a black top and features three large drawers. On the desk, there is a laptop, a vase with a plant, and some papers. Behind the desk is a wooden chair. The hutch is a tall wooden cabinet with four doors on top and a desk surface below. On the hutch desk, there is a lamp, a framed picture, a clock, and some books. The room has a vaulted ceiling with a skylight, a window on the left, and a door in the background. The floor is made of light-colored wood.

The EACMSI
Stickley Furniture Sale!

The Elizabeth Ann Clune Montessori School of Ithaca

Stickley Furniture Sale

The Elizabeth Ann Clune Montessori School of Ithaca is selling beautiful Stickley furniture that was generously donated by a friend to support the school's Capital Campaign. All proceeds will help to fund the construction of the new Andrea B. Riddle Center for Music, Movement and Art on the EACMSI King Road Campus.

All the pieces featured below are part of the Stickley 21st Century Collection and are in excellent condition. We worked with Stickley directly to determine the price of the furniture. More information about Stickley and their craftsmanship can be found at the end of the brochure.

If you are interested in viewing or purchasing the furniture please contact:

Lauren Ponzoni
Phone: 607.279.5119
Email: lmponzoni@gmail.com

OR

Pete Browning
Phone: 607.592.2576
email: petebrowning@verizon.net

All sales will be on a first come, first serve basis.
Items can be purchased individually or as a set.

EXECUTIVE DESK WITH GRANITE TOP

H30½ W72 D36

Black granite top. Seven drawers, two file drawers, drop front keyboard drawer.

Two desks for sale; both come with the black granite top.

Additional image included to show drawer view of desk.

\$2,652 each



Library desk

H29½ W50 D24R

Keyboard access drawer.

One for sale.

\$750



SQUARE LAMP TABLE WITH GRANITE TOP

H24 W26 D26

One for sale

\$661



21ST CENTURY CREDENZA

H30 W72 D22

With silk screened accents and ebonized hardwood inlay. Seven drawers with central locking system. One drop front keyboard, two fully extendable deep file drawers and four box drawers.

With

21ST CENTURY DECK

H52½ W74 D15½

With silk screened accents and ebonized hardwood inlay. One adjustable shelf behind all doors. Two halogen task lights over desk area. Vertical grain cherry back panel. Overall height with credenza 82½”.

*There are **three** Credenzas with Decks for sale. One Credenza has the desk option, shown in top image.*

Two Credenzas feature additional cabinet space in lieu of desk (bottom image).

Units for sale have ring pulls, to match the Executive Desk.

\$2,948 each



DINING TABLE WITH SILK SCREEN

H30 W44 L68

Features a solid top with silk screened accents and ebonized hardwood inlay.

With

SPINDLE SIDE CHAIRS

H46 W20½ D25½

With ebonized hardwood inlay.

Seat height: 19½

*Set includes **one** table, **two** leaves, and **six** chairs.*

\$4,264 for the set.



BUFFET

H34 W68½ D17

With silk screened accents and ebonized hardwood inlay. One adjustable shelf behind double doors.

One adjustable shelf behind right door.

***One** for sale*

\$2,342



CHINA TOP WITH ART GLASS

H48 W49 D18

These medium sized china cabinets feature art glass doors, adjustable glass shelves with plate grooves, chamfered corners with silk screened accents, ebonized hardwood inlay and interior canister lights with dimmer control. Buffet doors have a chamfered, moulded edge and solid cherry panels with silk screened accent. Adjustable shelf behind buffet doors.

Two for sale.

\$1,531 each



21ST CENTURY CHAIR

H34 W34 D34

Seat height: 20

Arm height: 25

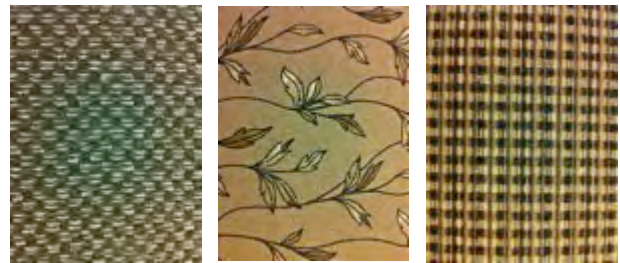
Between arms: 26

Chair shown is for example only.

Please see swatches for actual upholstery on available chairs

Three chairs for sale.

\$1,003 each



SWIVEL DESK CHAIR

H44 W27½ D26½

Upholstered in Stickley leather

One for sale

\$435







THE STICKLEY DIFFERENCE

Enduring Craftsmanship

Pride in craftsmanship is one of the cornerstones of the Stickley tradition. The Stickley motto "Als ik Kan" comes from a quote by Flemish painter Jan Van Eyck which loosely translated means "to the best of my ability." Even today each aspect of Stickley construction is approached with sincere dedication and a genuine respect for craft. We make our furniture the best we can. Stickley's many unique construction features make it the most lasting furniture being crafted today.

Among the special features are side hung and centerguided drawers, dovetailed cross rails, tongue and groove glue joining and specially designed bed rail and casting receivers. Some of these methods have been used by the Stickley brothers, others are more contemporary techniques designed to increase the durability of our classic designs.

Stickley's reputation for excellence sets the standard in the furniture industry. We're so sure of our quality construction that each master cabinet maker proudly puts his initials on every piece he builds.

Finishing

The legendary Stickley finish is the legacy of Leopold Stickley and his early experimentation with aqueous ammonium finishes. The finishing process currently takes no less than four days, and requires a complex series of applications. The first step is an aqueous stain followed by fine sanding, then an oil stain, a sealer and sealer sanding. After applying the lacquer topcoat which provides a heat, alcohol and mar resistant surface, our craftspeople carefully sand and polish all exterior and interior surfaces to give them a soft, lustrous patina.

The extraordinary care and skill that go into Stickley finishes guarantee that each piece of furniture has its own singular beauty. No two finishes are ever exactly the same, but every finish is deep, lustrous and displays the innate glow of the natural wood to its best advantage.



Hand Sanding

After intensive machine sanding, every piece of furniture is thoroughly hand sanded—even the insides of the drawers. Excess glue is carefully removed from all joints. All sharp edges are eliminated, joints are flushed, any scratch marks are removed, and the pores of the wood are opened. Final hand sanding is meticulously executed by skilled crafts people using time tested techniques.

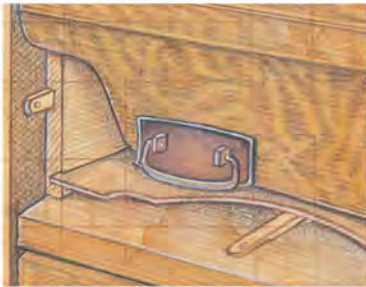


The Finishing Touch

Hand rubbing is one of the ways in which we are able to achieve the depth and clarity of the legendary Stickley finish.

UNIQUELY STICKLEY

The details shown here explain a few of Stickley's unique and time-honored construction techniques. As you become familiar with distinguishing characteristics of fine furniture, bear in mind that most of these techniques are used only by Stickley.



Side-Hung & Center-Guided Drawers

This method guarantees proper alignment of the drawer. The center guide keeps the drawers from skewing sideways. Suspension on the side guides keeps the drawers level even when heavily loaded. There is never any pressure against the bottom side edges, hence no scrape or screech and no excessive friction, pulling or tugging. One can literally stand in a Stickley drawer.



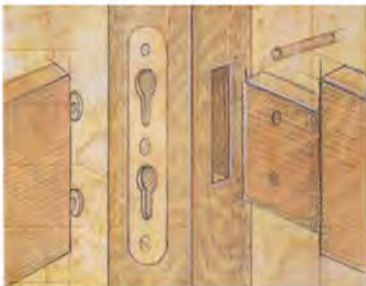
Resawn & Bookmatched Door Panels

When appropriate to the product design, door panels are resawn and bookmatched. Resawing is a process of splitting thick lumber into thinner boards. Once split, the halves are opened like a book revealing identical grain. This time-consuming and labor intensive process assures beautifully grained door panels on all pieces.



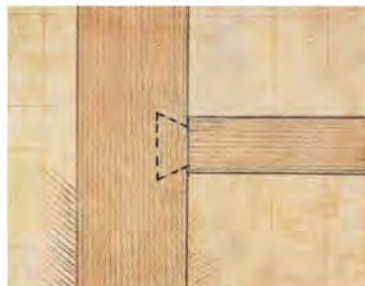
Door Joints, Pinned Mortise & Tenon

Most Stickley door joints are mortise and tenoned, glued, and pinned with wooden pins. The pins lock the joint supplying additional strength. This joint would hold together even without the use of glue.



Bed Rail Construction

The side rails of all beds are locked into a special casting. The end rails are mortised and tenoned into the posts and locked with wood pins. Two panhead screws are positioned at the ends of each rail to fit into an iron casting with a tongued slot. Our beds won't wobble or rock.



Dovetailed Cross Rails

Cross rails on cases are dovetailed into the ends to strengthen the case from side to side. This joint is self-locking even without glue, and separation of the end panels is impossible, unless the wood is split apart.



Tongue & Groove Joints

Tongue and groove joints ensure accurate board alignment and strong glue joints. This permits increased lumber thickness for solid, lasting furniture.